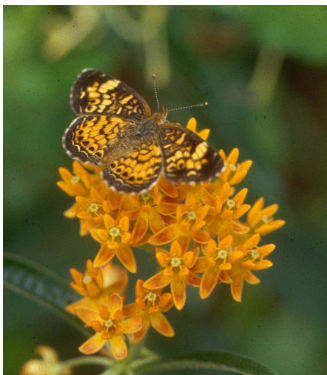


Thank you
for supporting
the LaGrange
County Parks.



Native plants will require less water than non-native cultivars and provide vital food and habitats for birds and beneficial insects.



The Friends of the
Lagrange County
Parks supports the
Parks Department
through
fundraising and
promotion of Park
activities.



Questions?
Call 260-302-1364



2018 Native Flower Sale



All Flower sales go to benefit
the LaGrange County Parks

Native Flower Species

Broadleaved Purple Coneflower -Echinacea Purpurea



This iconic coneflower species grows from 3' to 5' tall and blooms early to late summer. These blooms are a favorite nectar source for butterflies and in the fall the seeds attract songbirds to your garden. This flower prefers full to partial sunlight in medium to dry soils.

Black Eyed Susan-Rudbeckia Hirta



A garden favorite this flower blooms to with 3" wide bright yellow flowers. Growing 1'-3' high in dry to moist soils and full to partial sun. This plant is an excellent attraction for passing songbirds and butterflies.

Butterfly Milkweed-Asclepias Tuberosa



A delicious perennial favorite for traveling butterflies. This flower grows from 1'- 2' tall with dense groups of 5-25 bright orange flowers growing 1-2" in diameter.

Prairie Blazing Star - Liatris Pycnostachya



This perennial flower blooms in unbranched stems 5' tall forming spiky clusters of flower heads. This plant blooms in late summer. It grows best in dry to moist soils and full sun.

Blue Flag Iris, Iris Virginica



A showy wetland wildflower this iris blooms with 2"-4" blue to violet blossoms from late spring to mid-summer. The stems will reach from 2' to 3' in height. It thrives in moist soils and full to partial sunlight but it will tolerate light shade.

Flower Pricing

Flowers must be ordered in groups of 5.

Bundle of 5 = \$10.00

(Bundles must be all of one species)

PLEASE NOTE:

1. Send payment with order form.
2. Make check payable to:

**Friends of the Lagrange County Parks/
LCCF**

(Sorry, no credit cards accepted.)

3. Orders are filled on a first come first served basis.
4. Flowers are in soil plugs.
5. There is no guarantee on plants . The Friends of the Lagrange County Parks cannot furnish replacements.
6. Receipt for payment will be sent with pick-up date notification in April 2018. Pick-up will be in May 2018.
7. DEADLINE for pre-orders: March 30, 2018
8. This sale is to benefit the Lagrange County Parks department. **Orders and payment checks must be sent separate from SWCD Tree Sale payments**
9. Please call (260) 302-1364 with any questions.

NATIVE FLOWER ORDER

Customer Name _____

Address _____

Telephone _____

Email _____

| Bundle QTY | Flower Species | Total |
|------------|----------------|-------|
|------------|----------------|-------|

| | | |
|--|-------|----|
| | | \$ |
| | | \$ |
| | | \$ |
| | | \$ |
| | | \$ |
| | Total | \$ |

This order form is for **native flower sales only**. Please include this form and your payment together. This payment will be separate from your tree order form.

Please mail your order form and payment to:

**Friends of the Lagrange County
Parks/LCCF**

2175 S 445 E

Lagrange, IN 46761